

B E A R S M A R T D U R A N G O

helping people and bears coexist benefits both

2011 SUMMARY REPORT



BEAR SEEN IN AUGUST IN PERINS PEAK STATE WILDLIFE AREA

Table of Contents

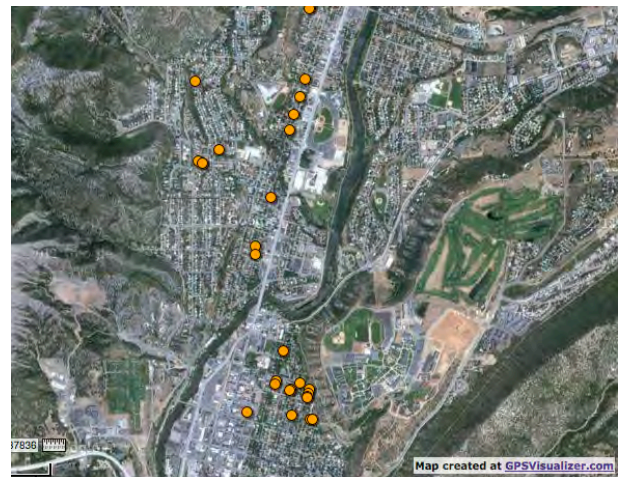
- 1. ABOUT THIS REPORT
- 2. DESCRIPTION OF AREA
- 3. BEAR SIGHTING AND INCIDENT REPORTS
 - Reports By Month 2011
 - Average Reports By Month 2007-2011
 - Total Reports 2007-2011
- 4. AREA BEAR MORTALITY
 - Hunter, Non-Hunter and Total Mortality
- 5. ENFORCEMENT OF ORDINANCES
 - City of Durango and La Plata County
- 6. ACKNOWLEDGEMENTS
- 7. APPENDIX



YOUNG BEAR IN RAFTER J SUBDIVISION



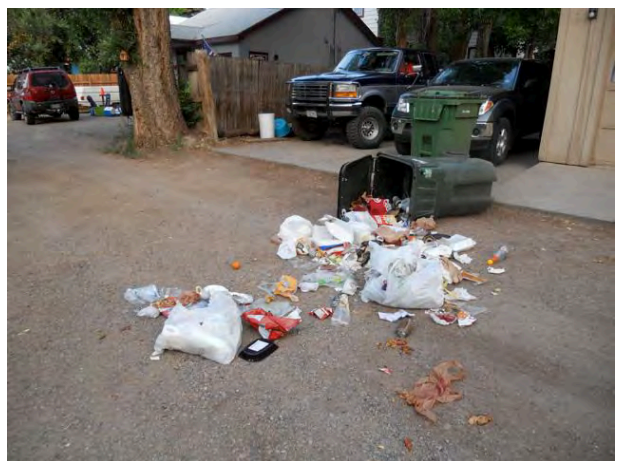
YOUNG BEAR GETTING INTO TRASH IN RAFTER J



GPS MAP OF BEAR-STREWN TRASH FROM JULY 19, 2011



HOMELESS MAN IN TOWN BIT BY A BEAR



BEAR-RESISTANT CONTAINER THAT WASNT LATCHED

About this Report

Bear Smart Durango has compiled black bear (*Ursus americanus*) sighting and incident data annually starting in 2007. This data originally consisted of reports received by the Area 15 Colorado Parks & Wildlife (formerly CDOW) office, Bear Smart Durango, *The Durango Herald* Bear Tracker, City of Durango Code Enforcement and La Plata County Sheriff's Office. Sightings include bear seen, bear in tree, etc and incidents include bear in trash, bear on porch, bear in bird feeder, bear in home, etc. 2011 sighting and incident data consists only of reports to or by the Area 15 Colorado Parks & Wildlife office and Bear Smart Durango.



BEING FED BIRD SEED



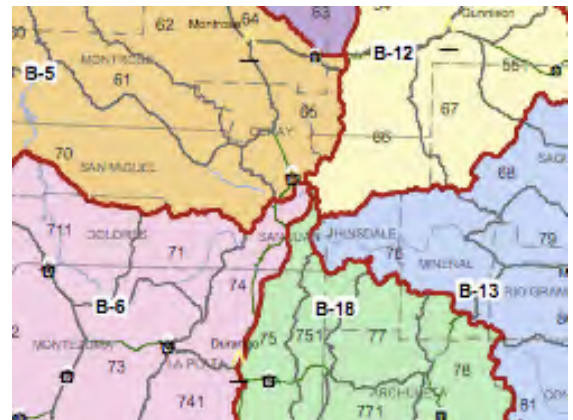
BEAR NEAR THE JUNCTION CREEK TRAILHEAD



BEAR IN TRAILER PARK DUMPSTER

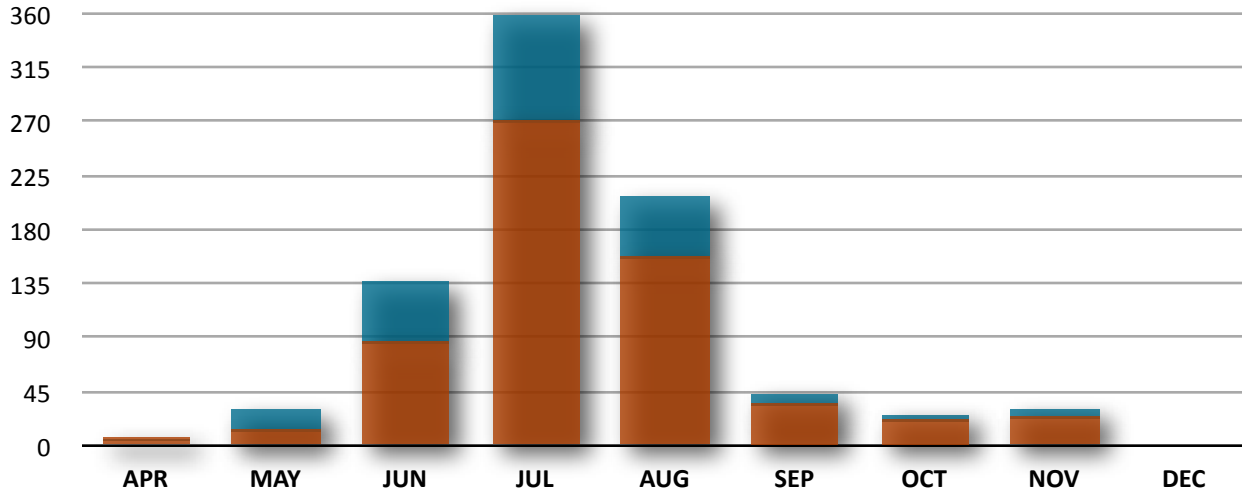
Description of Area

Due to how data is collected by various sources, defining what is meant by our area is problematic. Bear sighting and incident data covers La Plata County, while bear management data is from Area 15 of the SW Region of Colorado Parks & Wildlife. Area 15 includes the communities of Durango, Cortez and Pagosa Springs and is comprised of Bear Data Analysis Units (DAU's) B-18 and B-6. DAU's B-18 and B-6 divide La Plata County in half and contain Game Management Units (GMU's) 711, 71, 72, 73, 741, 74, 75, 751, 77, 771 and 78. (See maps below for reference).

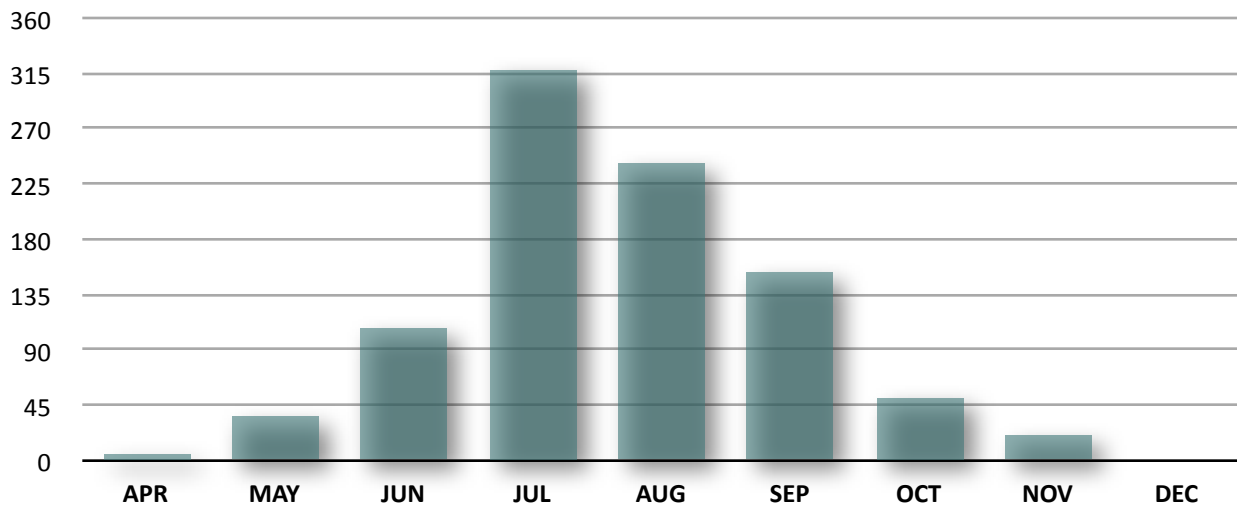


Bear Sighting and Incident Reports

■ Bear In Trash Reports By Month in 2011 ■ Other Reports By Month in 2011

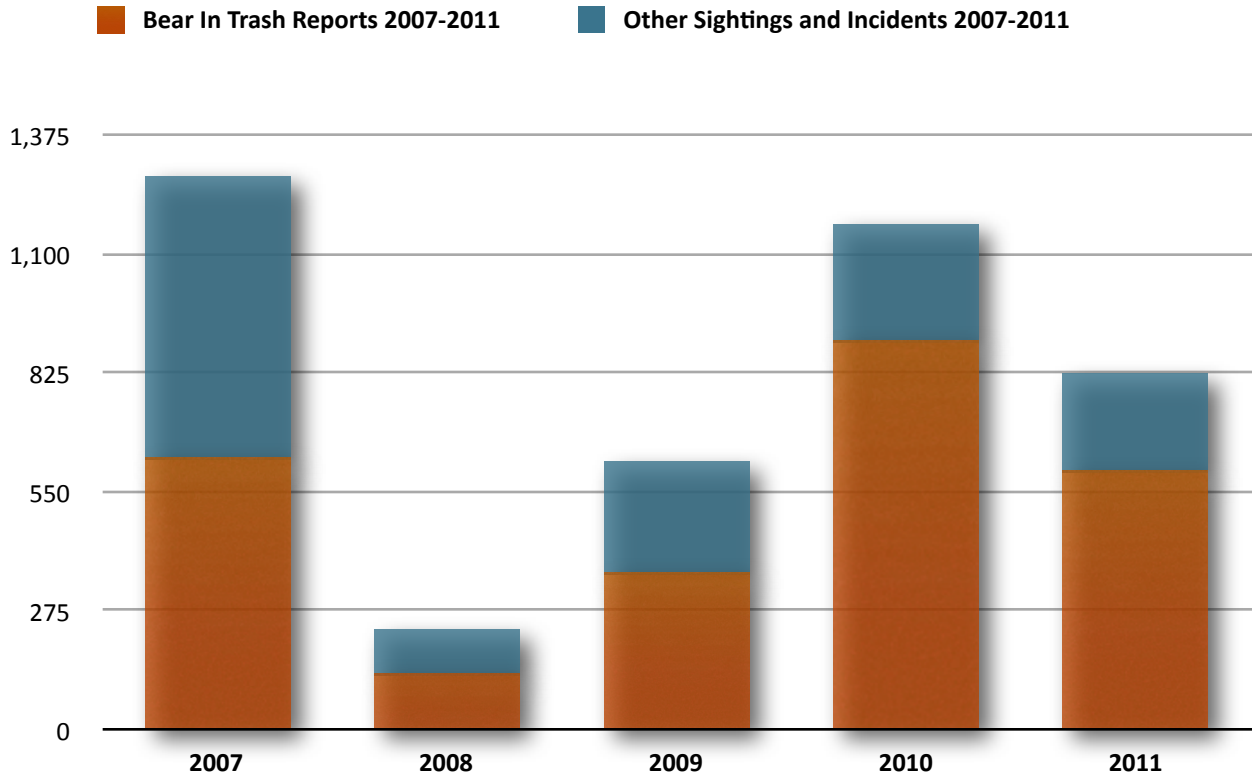


■ Average Reports By Month 2007-2011 (2008 EXCLUDED)



	APR	MAY	JUN	JUL	AUG	SEP	OCT	NOV	DEC
BEAR IN TRASH REPORTS	5	11	84	268	155	33	20	22	0
TOTAL REPORTS IN 2011	6	28	134	356	206	42	24	29	0

	APR	MAY	JUN	JUL	AUG	SEP	OCT	NOV	DEC
AVG REPORTS 2007-2011	7	36	108	319	242	153	52	22	1.5



	2007	2008	2009	2010	2011	AVG (EX 2008)
BEAR IN TRASH REPORTS	621	121*	359	892	598	617
TOTAL REPORTS	1274	228*	616	1162	825	969

NOTE: 2008 REPORTS ARE LOW DUE IN PART TO LIMITED A.M. TRASH MONITORING



300-GALLON CONTAINER ACCESSED BY BEAR OFF MAIN AVE



BEAR WITH DEER FAWN IN A RAFTER J BACKYARD

Area Bear Mortality

Data is collected by the Colorado Parks & Wildlife for all bear mortality statewide, including hunter harvest and non-hunter mortality.

Hunter harvest consists of black bears taken legally during hunting seasons. Black bears in our area are harvested in all manners of take including archery, black powder and rifle. **Non-hunter mortality** is any bear mortality outside of hunting and includes vehicle mortality, destruction of nuisance bears by wildlife officials, bears shot by landowner, electrocution and other.

Note: 2011 hunter harvest and non-hunter mortality data will be available in spring 2012.



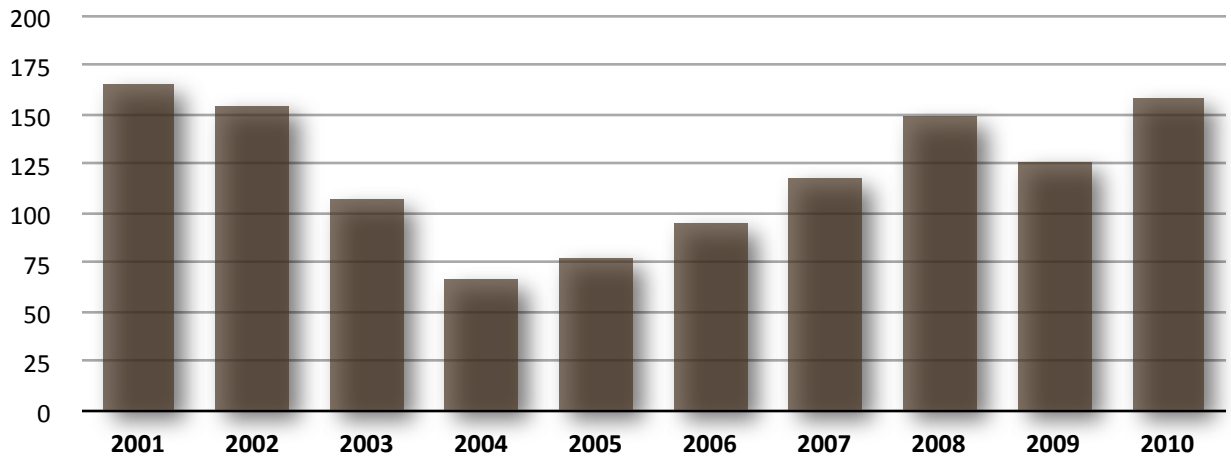
CUB OF THE YEAR KILLED BY VEHICLE NEAR CHAPMAN HILL

	2001	2002	2003	2004	2005	2006	2007	2008	2009	2010	AVG
HUNTER HARVEST	165	154	108	66	79	96	119	150	127	160	122

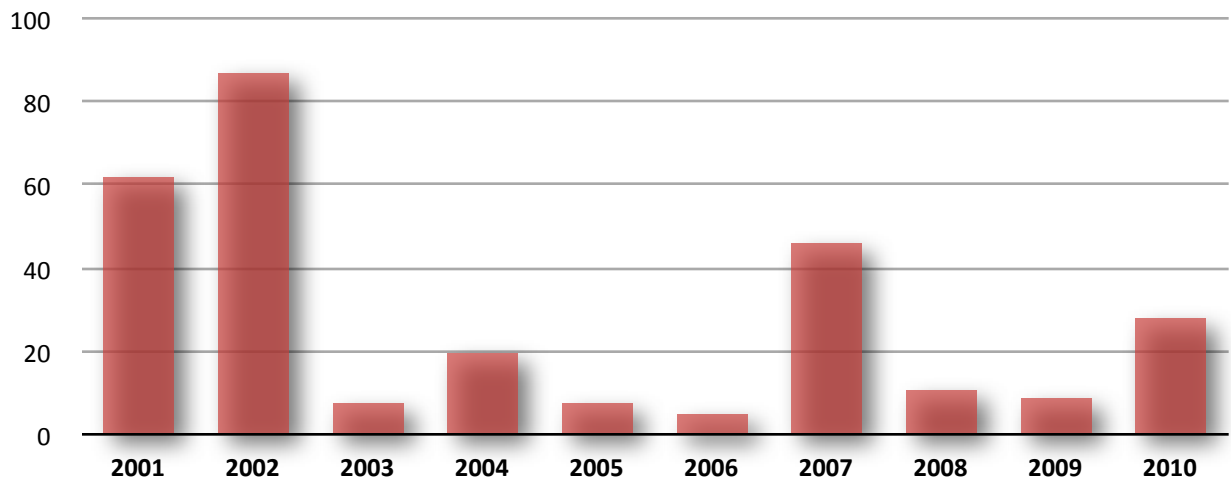
	2001	2002	2003	2004	2005	2006	2007	2008	2009	2010	AVG
NON-HUNT MORT	62	87	8	20	8	5	46	11	9	28	28

	2001	2002	2003	2004	2005	2006	2007	2008	2009	2010	AVG
TOTAL MORTALITY	227	241	116	86	87	104	165	161	136	188	151

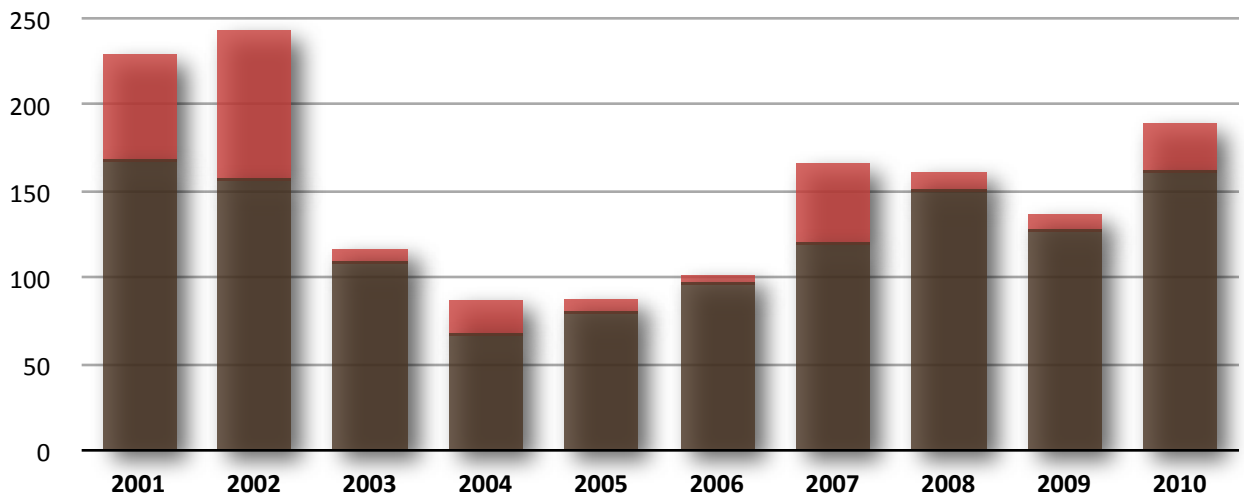
■ Area 15 Hunter Harvest 2001-2010



■ Area 15 Non-Hunter Bear Mortality 2001-2010



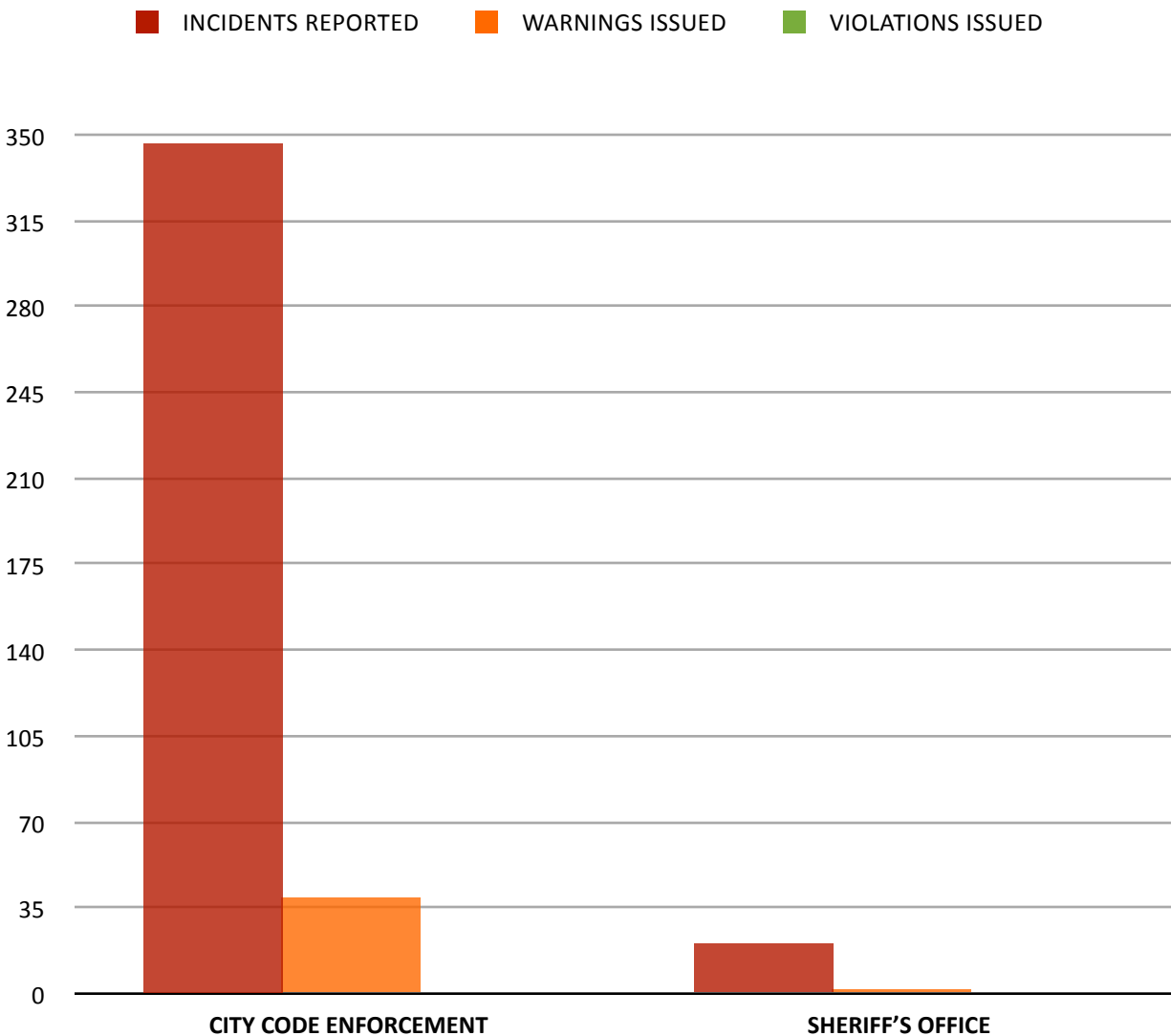
Area 15 Total Bear Mortality 2001-2010



Enforcement of Ordinances

La Plata County passed a **Wildlife-Resistant Trash Container Ordinance** in 2008 and the City of Durango passed a **Wildlife Ordinance** in 2010, both with the intention of limiting the amount of trash available to bears.

In 2011, there were 598 total reports of bears getting into trash - (486 in the city and 112 in the county). City Code Enforcement officers recorded 347 incidents of bears in trash in the city and issued 39 written warnings resulting in one violation (38 of the 39 written notices resulted in residents obtaining bear-resistant trash containers). The La Plata County Sheriff's Office recorded 21 bear calls and issued two warnings resulting in no violations.



	INCIDENTS REPORTED BY LAW AGENCY	WARNINGS ISSUED	VIOLATIONS ISSUED
CITY CODE ENFORCEMENT	347	39	1
SHERIFF'S OFFICE	21	2	0

Acknowledgements

The following made valuable contributions towards the collection of bear sighting and incident data and this summary report: Colorado Parks & Wildlife, Keary Howley and Ecosphere Environmental Services, Ballantine Family Fund, Living with Wildlife Advisory Board of La Plata County, City of Durango Code Compliance, La Plata County Government, La Plata County Sheriff's Office, Megan Hayes, Lorna Robinson and Jazz Morgan.



Bear Smart Durango is a 501(c)(3) non-profit organization dedicated to reducing human-bear conflict. Founded in 2003, Bear Smart Durango educates residents on coexisting with black bears, advocates for meaningful policies that address the feeding of bears and works to make bear-proofing of trash more available in our area.



PHONE: 970-749-4262

EMAIL: BP@FRONTIER.NET

LIKE US ON FACEBOOK

WWW.BEARSMARTDURANGO.ORG

APPENDIX 1: CITY OF DURANGO MAP SHOWING RATE OF SEVERITY IN 2011 BEAR IN TRASH REPORTS

